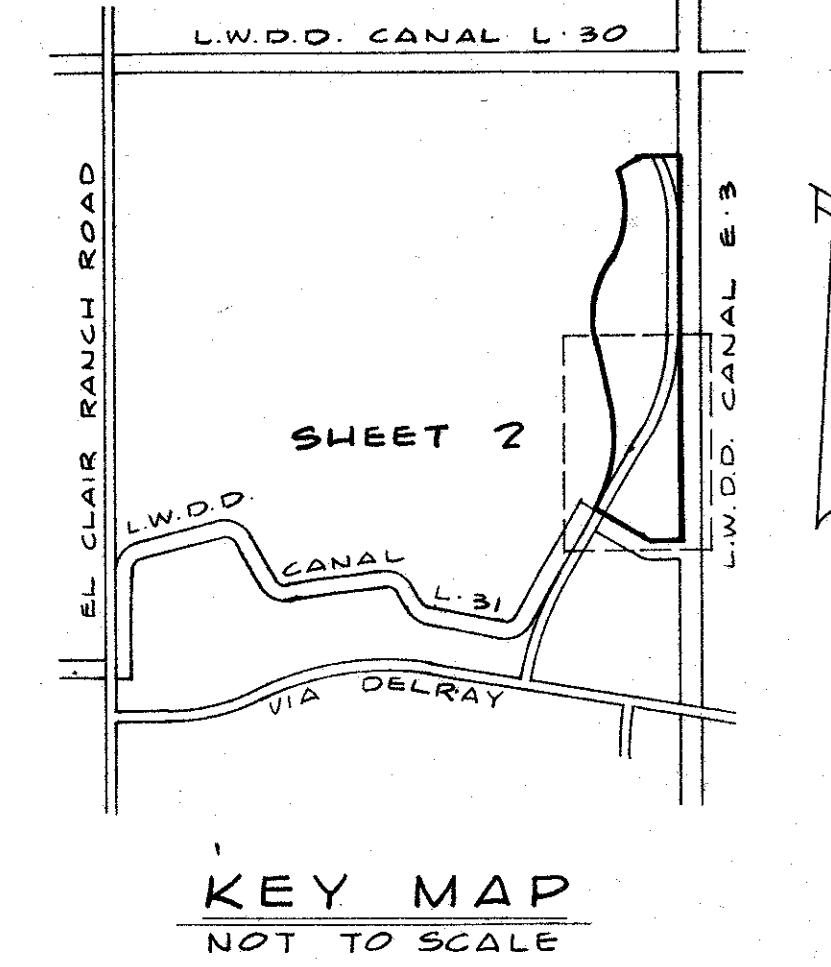
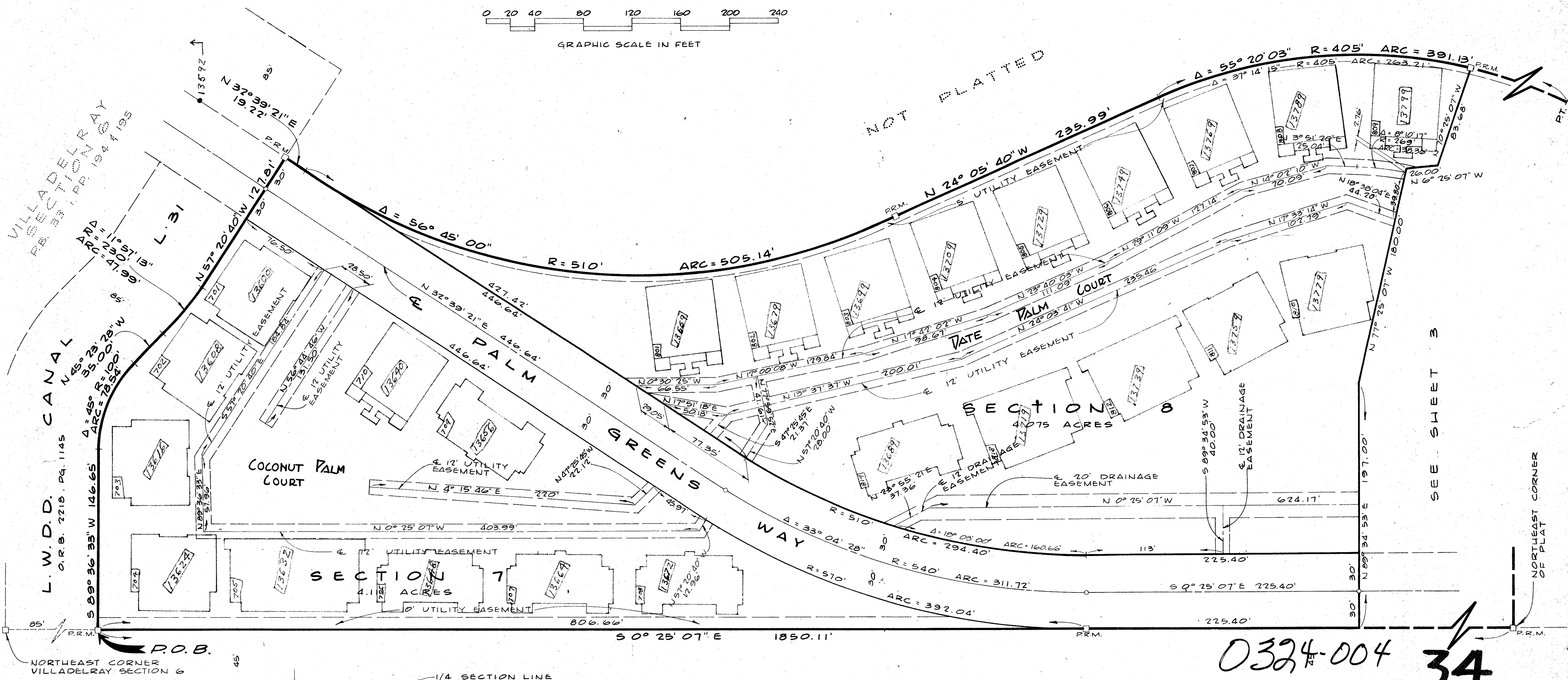
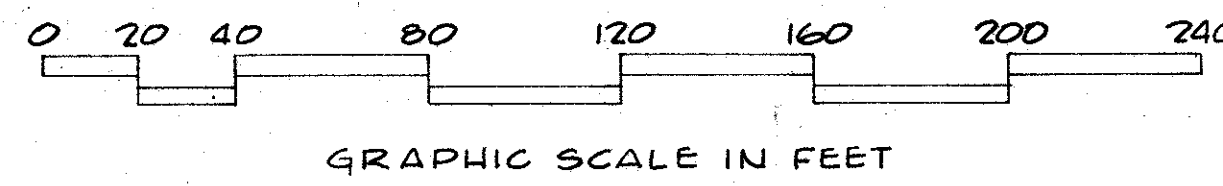


A PLANNED UNIT DEVELOPMENT  
**VILLADELRAY - SECTION 7, 8 AND 9**  
 PALM BEACH COUNTY, FLORIDA  
 IN 3 SHEETS - SHEET NO. 2

174



MERIDIAN OF VILLADELRAY PLAT II  
 P.B. 30, PP. 77-79



SEE SHEET 3

NORTHEAST CORNER OF PLAT

0324-004  
 34  
 174

L.W.D.D. CANAL E-3  
 O.R.B. 2218, PG. 1159  
 D.B. 118, PG. 518

**VILLADELRAY #7, 8 + 9**

Field Book No. Pg.	ROBERT E. OWEN & ASSOCIATES, INC.	PLANNED UNIT DEVELOPMENT	Job No. 77-1161
Design J.C. STE	ENGINEERS - PLANNERS - SURVEYORS	VILLADELRAY	Scale 1" = 40'
Draft E.M. SIKORA	WEST PALM BEACH FLORIDA	SECTION 7, 8 AND 9	Date MARCH 1978
Checked		PALM BEACH COUNTY, FLORIDA	Sheet of 3 2
		IN 3 SHEETS - SHEET NO. 2	File No. BF-2268